



## Ensure no student slips through the cracks



Your students' safety and wellness has always been a top priority. However, the unfortunate reality is that there are almost certainly students suffering from poor mental health and wellness in your school community right now.

If these issues are left unmanaged, they often lead to lower achievement, chronic absenteeism, and higher dropout rates. They may also manifest in more dangerous ways, including depression, violence, bullying, self-harm, and suicide.

When your students' safety and wellness is at stake, your ability to quickly identify the students who need support now is essential. When you're already stretched thin, it's also understandably challenging to take on one more thing. But having the right information at the right time can literally make a life or death difference.

Securly Rhithm provides it. With Rhithm, you can:

- Conduct daily wellness check-ins—in under 5 minutes and with no special training required
- Capture student voice equitably and inclusively
- Gain near real-time insight into current safety and wellness concerns
- Deliver in-the-moment activities that help students regulate and get ready to learn
- Know which students need your help today

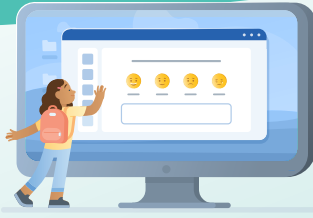
*"I love Rhithm because it gives me real-time data about our students and how they are doing."*

**Maria Centeno**

Assistant Principal, El Paso Independent School District

## How Rhithm works

Students (and staff, too) self-report how they're feeling each day using a simple emoji-based questionnaire.



Based on their answers, Rhithm presents a short individualized activity that teaches an essential life skill and prepares them to learn.



In under 5 minutes, you're able to support five key areas of wellness: mental, emotional, energetic, physical, and social (MEEPS).



Use self-reported data to quickly identify students who need immediate intervention, as well as track and monitor wellness trends at a school or district level.



## Benefits

- Know which students need help now and provide potentially life-saving intervention
- Provide an equitable and inclusive way to capture student voice
- Quickly identify safety and wellness concerns at a student, school, and/or district level
- Support in-the-moment student needs with evidence-based activities
- Improve your students' readiness to learn and academic performance
- Deliver consistent Tier 1 intervention and prevention aligned with MTSS/RTI/TRBI
- Use students' self-reported data to inform Tier 2 and Tier 3 interventions

## Features

- Simple and inclusive daily check-ins
- Easy setup and deployment
- Alignment with evidence-based frameworks (MTSS, RTI, TBRI)
- Integration with Classlink and Clever
- Activities that automatically adapt for age, grade, and learning level
- Customizable surveys and assessments
- Intuitive dashboards simplify data analysis and reporting

## Know which students need your help today with Securly Rhithm

It's possible there are students in your school community who are struggling right now. Know who they are with Rhithm.

Ready to experience Rhithm for yourself? [Click Here](#) or [Scan the QR Code](#)

